



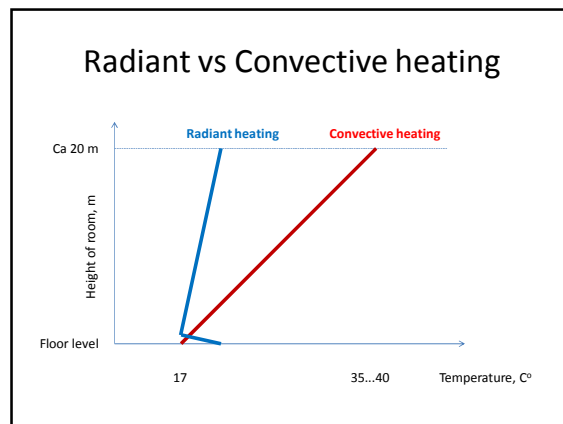
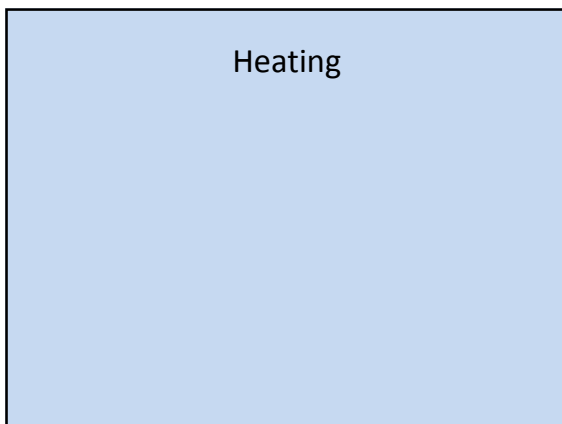
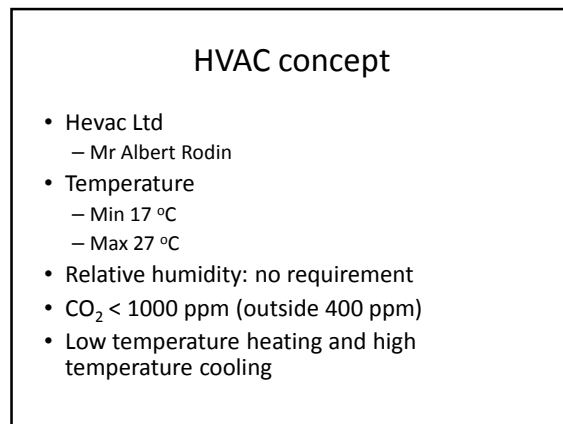
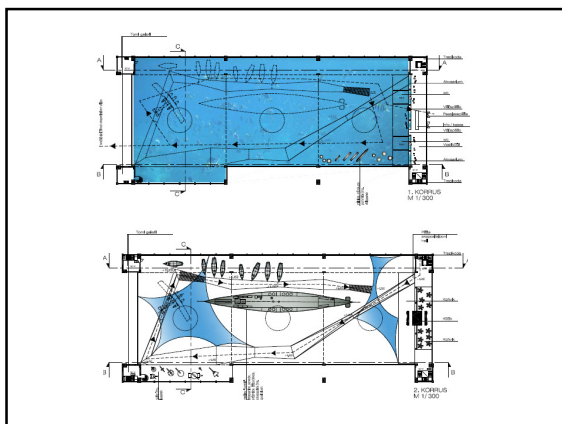
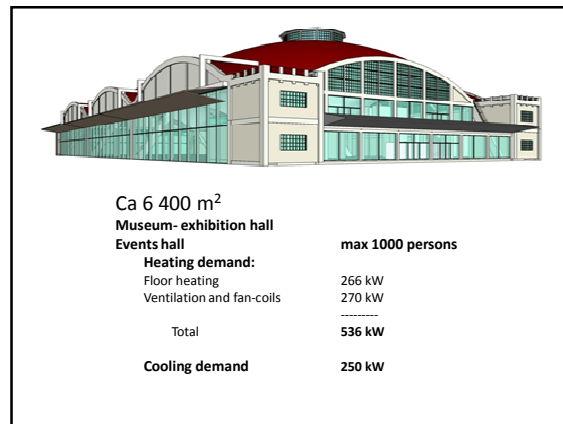
Indoor climate solutions in historic
buildings based on the example of
Seaplane Harbour

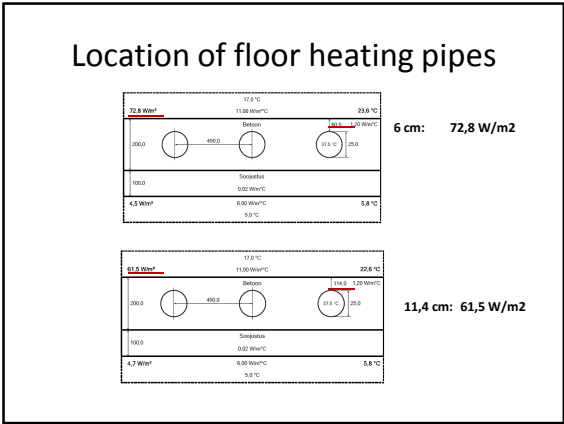
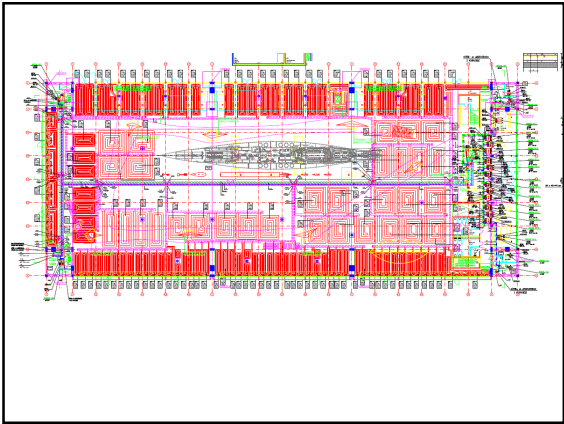
Teet Tark
Hevac Ltd
Teet.tark@hevac.ee

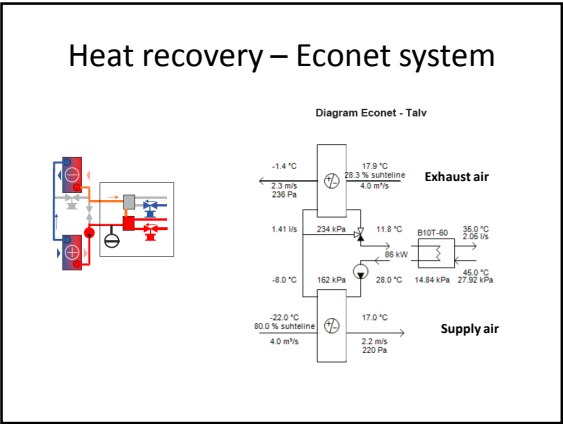
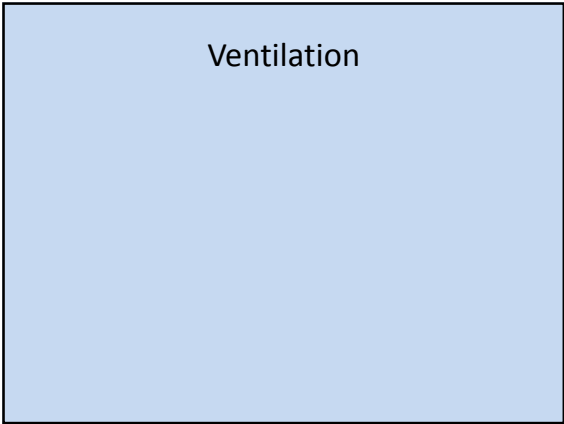
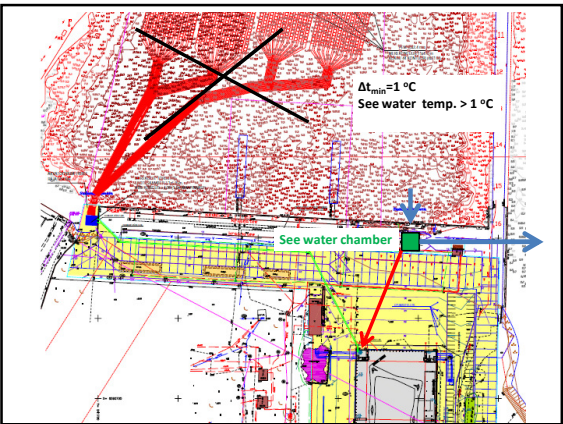
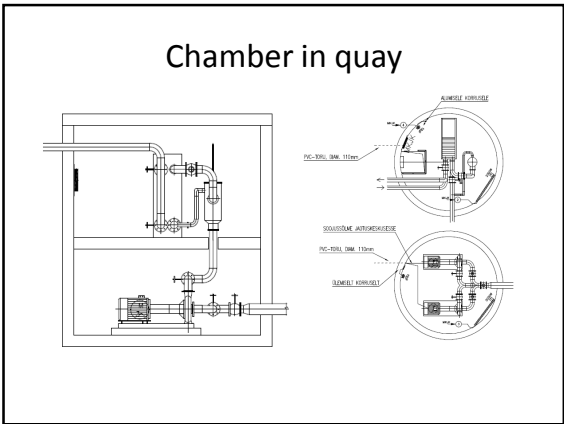
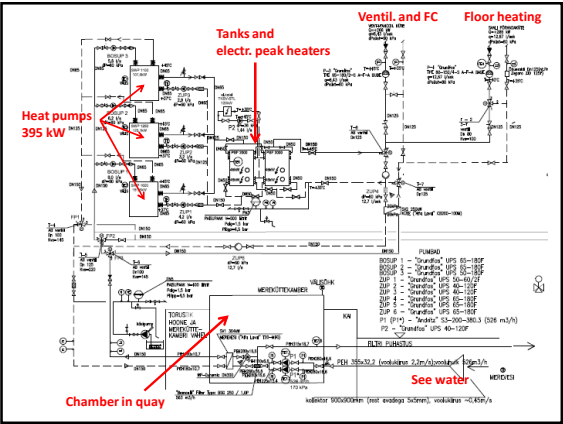
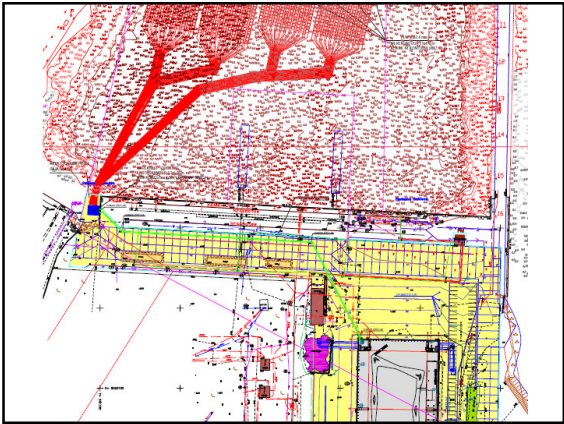
Architect: KOKO Arhitektid OÜ

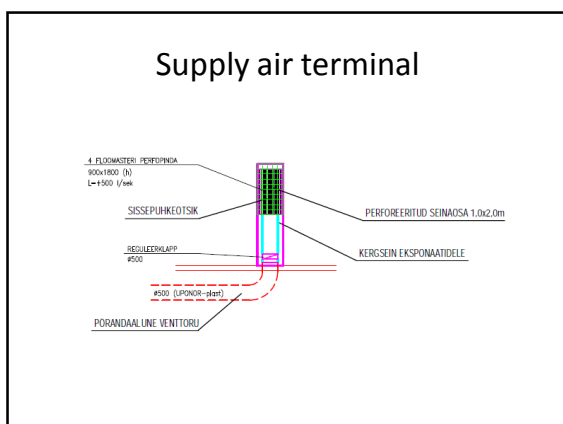
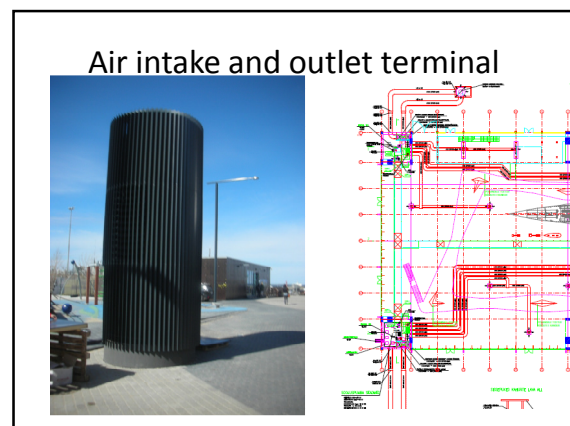
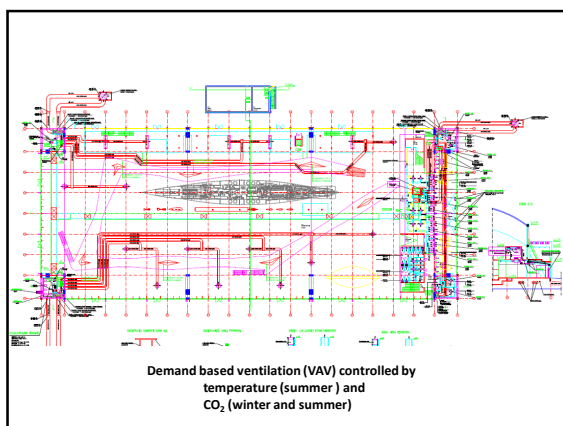
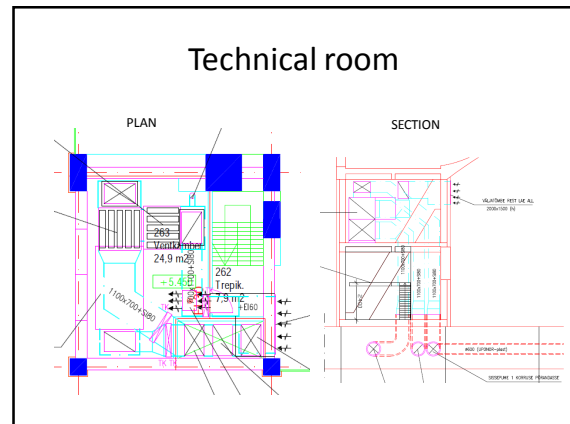
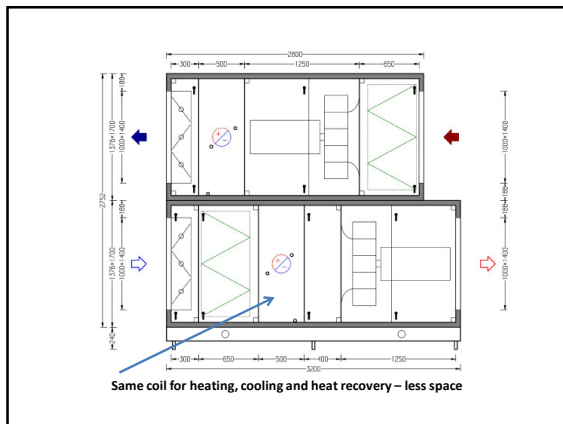


Three shell concrete domes

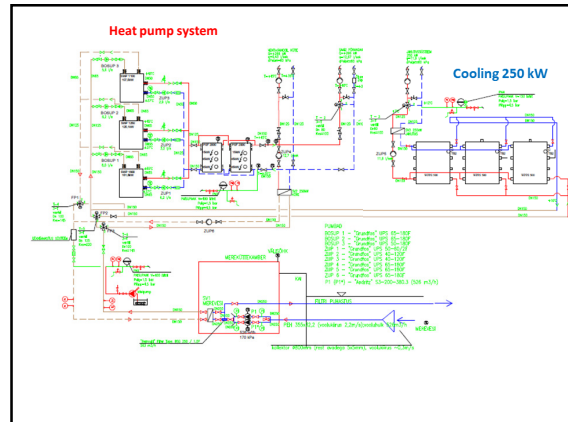




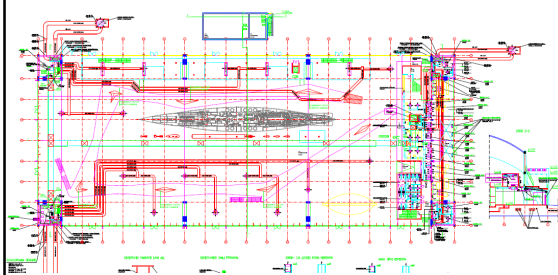




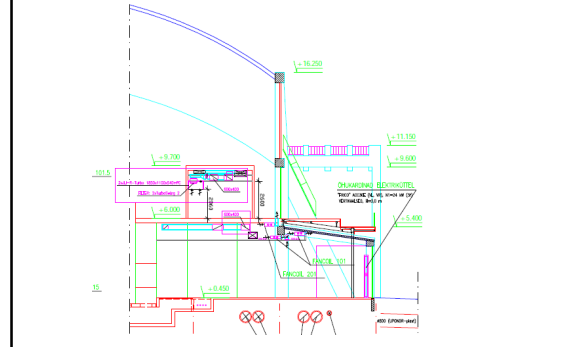
Cooling



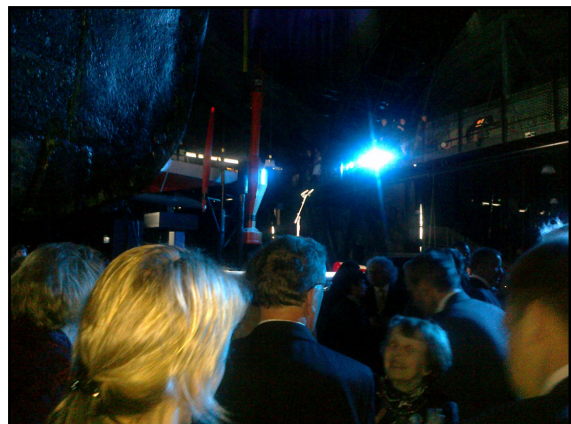
Integrated with ventilation

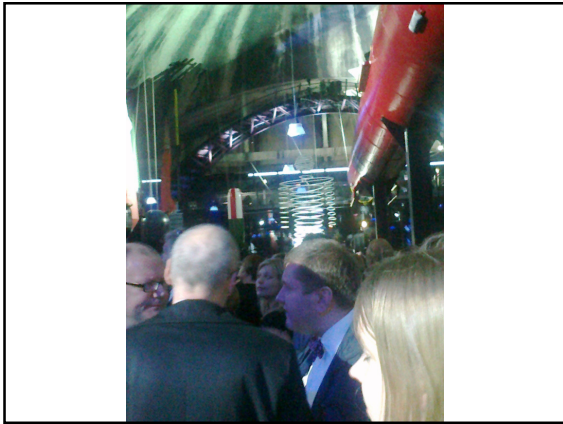


Fan-coils



Solar shading





- THANK YOU FOR YOUR ATTENTION!!!
- Welcome to visit Seaplane Harbour!!!

